

Green 4 Data Cube

“Data Cube: A block of data, often extracted from a data warehouse, offering fast access/views of data in any number of dimensions.”

The main element of any data analytical software is how to access the data, there is no magic wand for getting access to the data for the end user however Green 4 solutions have built a multi dimensional data cube that queries the data so that users are able to extract and match the data they require without the need for access to the database.

Using Green 4 built data cubes users can quickly and easily select the data required for the current

report and insert it into a pivot “style” table for analysis and graphical representation.

By querying multi dimensions of the data it is possible to display, analyse and compare multiple combinations of the data availab

The data cube queries the data in multiple dimensions making it readily available for analysis using the GUI and eliminating the need for any additional SQL querying skills.



By developing one or more bespoke data cubes - a rendering for gender, location, demographic, event, ticket, transaction and attendance, Data Dimension is provided.

Automatically reads data from Dynamics CRM database to build values for KPI and members and measures for dimensionn/ attributes. This completely bypasses the need to construct a cube from scratch each time.

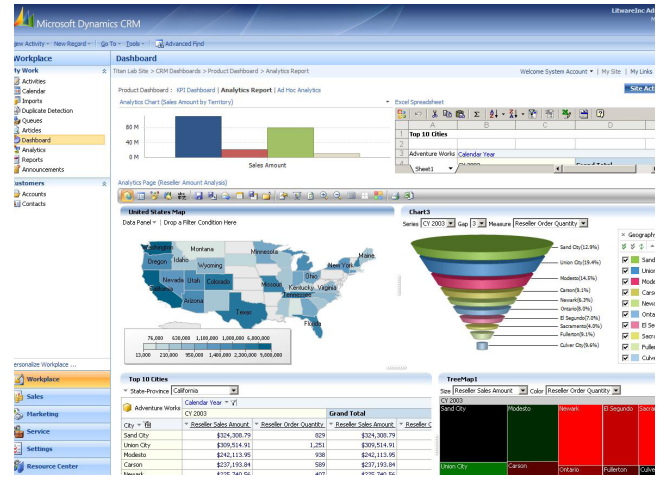
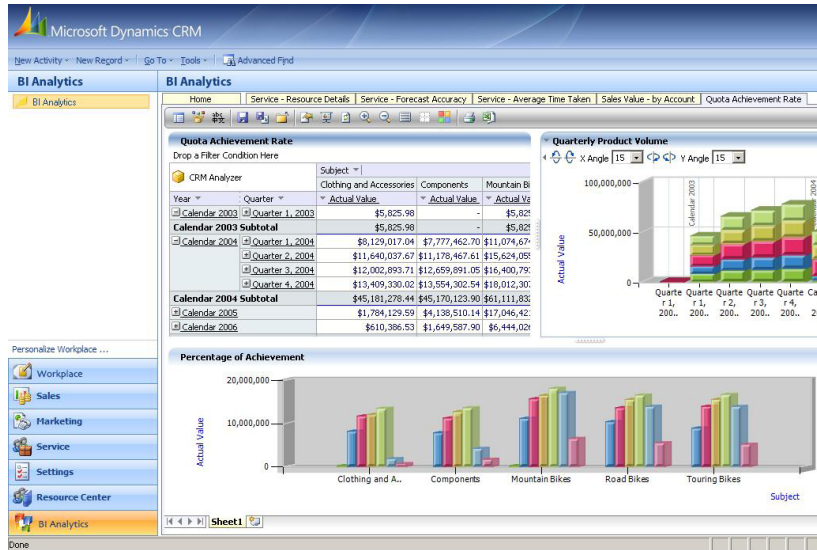
Automatically creates a relationship between System User and Security role within Dynamics CRM, plus transfers all necessary Security role data privileges.

Once the data cube is built a number of external GUI options are available ranging from Visual Studio, Excel and other third party tools- all of which work in a similar way and produce similar results. Green 4 Solutions recommends a user interface that works directly within Microsoft CRM is used so that the user has no need to enter or learn any additional software to start the analytics process and navigate seamlessly between tasks. Once the data cube is built a number of external GUI options are available ranging from Visual Studio, Excel and other third party tools- all of which work in a similar way and produce similar results. Green 4 Solutions recommends a user interface that works directly within Microsoft CRM is used so that the user has no need to enter or learn any additional software to start the analytics process and navigate seamlessly between tasks.

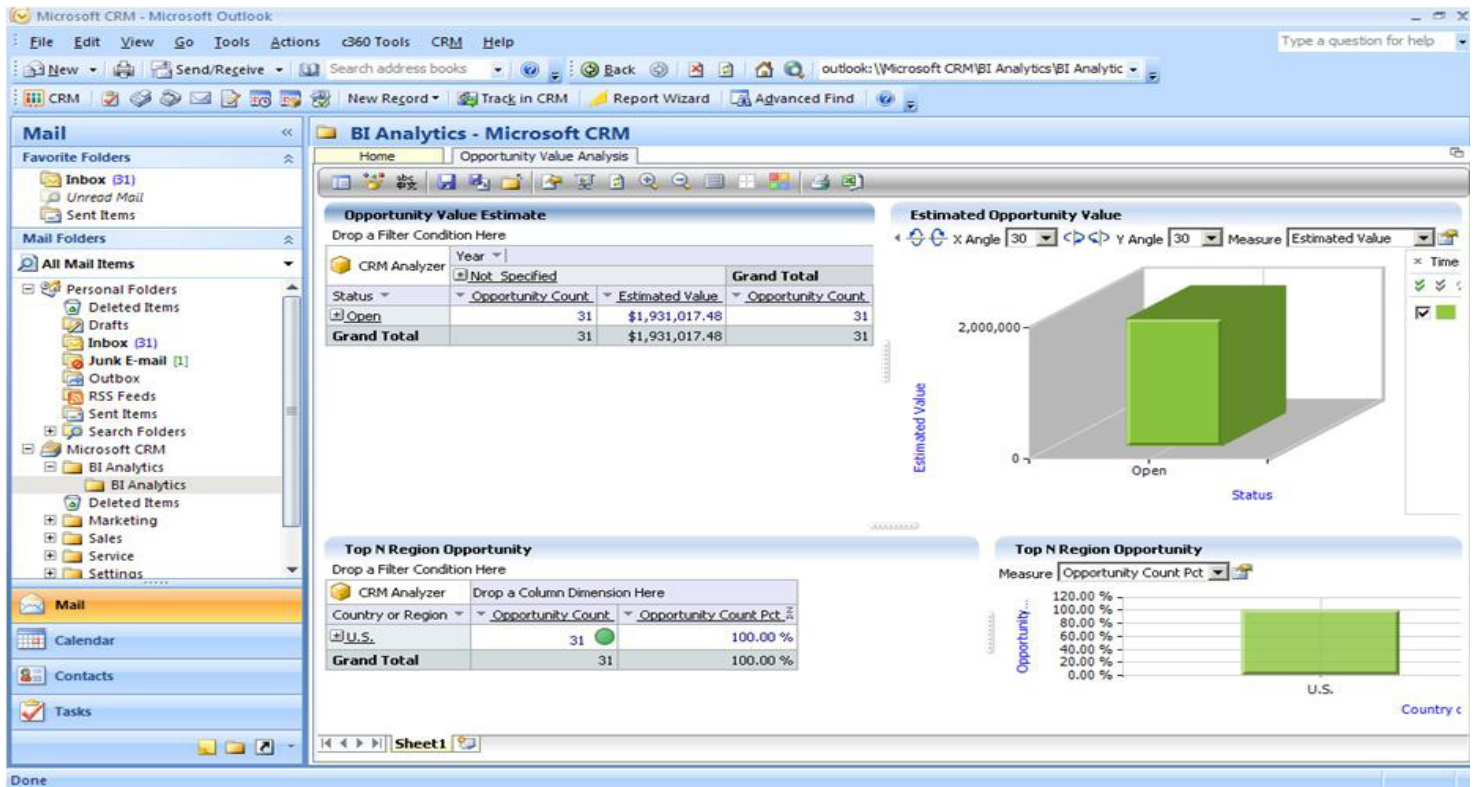
The BI analytic tool enables the graphical visualisation of any report or table produced from the data cube simply and without the need to leave the CRM environment. This is shown in more detail in the following images.

Green 4 Data Cube

“Data Cube: A block of data, often extracted from a data warehouse, offering fast access/views of data in any number of dimensions.”



The above screenshots show the drag and drop facility.



Accessible through CRM's Outlook client